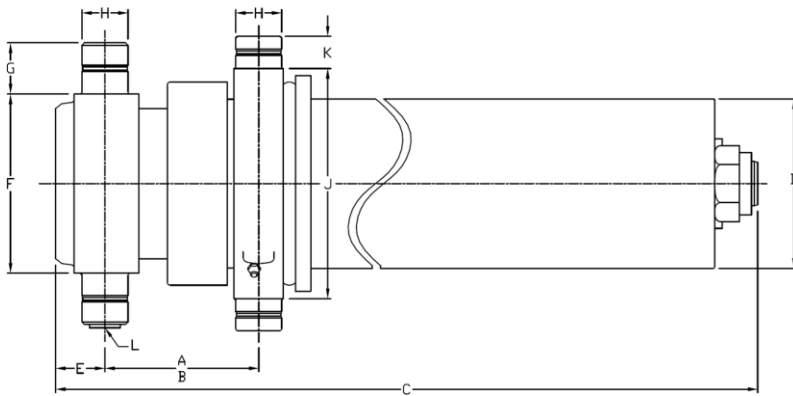


Technical information

Dimensions

Imperial

Metric



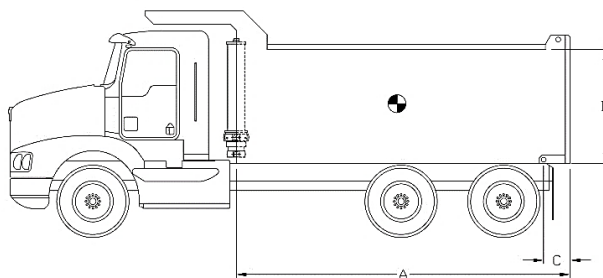
| | | |
|------------|-----------|----------|
| A (stroke) | 216,63 in | 5 502 mm |
| B (closed) | 7,63 in | 194 mm |
| C | 57,88 in | 1 470 mm |
| D | 7,50 in | 191 mm |
| E | 2,00 in | 51 mm |
| F | 8,00 in | 203 mm |
| G | 2,00 in | 51 mm |
| H | 2,25 in | 57 mm |
| J | 10,19 in | 259 mm |
| K | 1,50 in | 38 mm |
| L | SAE-16 | |

| Stage | Effective diameter | | Effective area | | Stroke | |
|-------|--------------------|--------|-----------------------|------------------------|----------|----------|
| 1 | 5,795 in | 147 mm | 26,38 in ² | 17 016 mm ² | 42,88 in | 1 089 mm |
| 2 | 5,000 in | 127 mm | 19,64 in ² | 12 668 mm ² | 43,25 in | 1 099 mm |
| 3 | 4,250 in | 108 mm | 14,19 in ² | 9 152 mm ² | 43,44 in | 1 103 mm |
| 4 | 3,500 in | 89 mm | 9,62 in ² | 6 207 mm ² | 43,81 in | 1 113 mm |
| 5 | 2,750 in | 70 mm | 5,94 in ² | 3 832 mm ² | 43,25 in | 1 099 mm |

| Specifications | Imperial | Metric |
|---------------------------------|----------------|-----------|
| Weight without hydraulic fluid | 485 lb | 220 kg |
| Hydraulic fluid volume | 16,0 gal. (US) | 61 l |
| Maximum working pressure | 1 750 psi | 121 bar |
| Maximum pump flow | 25 gpm | 95 lpm |
| Cylinder design limit capacity* | 23,4 US tons | 21 228 kg |

| Installation components | Model | Part no. |
|-------------------------|-------------|-------------|
| Block | B-2250 | PB3005003-A |
| Frame | AC-4040 | PF3000014 |
| Hinge | P-200 PEL-T | PP3004010 |

Cylinder capacity



A = Body Length
B = Body height
C = Overhang

| Note: | Body length | 21,5 ft | | 23,0 ft | | 24,0 ft | |
|---|-------------|--|-------------|-------------|-------------|-------------|-------------|
| Cylinder capacities based on 90% of the maximum working pressure. | Overhang | 6 in | 12 in | 6 in | 12 in | 12 in | 18 in |
| | Dump angle | 51,1° | 52,4° | 47,4° | 48,6° | 46,3° | 47,4° |
| | Body height | Capacities for different box length configuration in US tons at 2000 psi (at 1750 psi) | | | | | |
| For reference only. See www.mailhotindustries.com | 36 in | 15,3 (13,4) | 16,1 (14,1) | 14,5 (12,7) | 15,2 (13,3) | 14,7 (12,8) | 15,3 (13,4) |
| | 48 in | 16,1 (14,1) | 17,0 (14,9) | 15,1 (13,2) | 15,8 (13,8) | 15,2 (13,3) | 15,9 (14,0) |
| | 60 in | 16,9 (14,8) | 18,0 (15,8) | 15,7 (13,8) | 16,6 (14,5) | 15,9 (13,9) | 16,7 (14,6) |

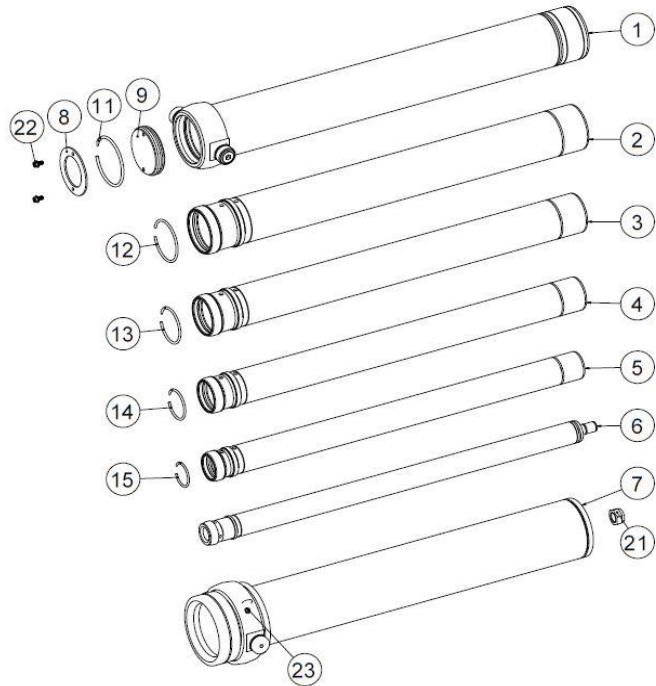
* See product manual

Subject to change without notice, all rights reserved.

REV 1C

| Item | Part no. | Description |
|------|----------|-------------|
|------|----------|-------------|

| | | |
|---|-------------|---------------------|
| 1 | ROV067027-A | BASE TUBE Ø6.7 |
| 2 | RMG057195-A | SECTION Ø5.7 |
| 3 | RMG050152-A | SECTION Ø5 |
| 4 | RMG042151-A | SECTION Ø4.25 |
| 5 | RMG035133-A | SECTION Ø3.5 |
| 6 | RNV027062-A | LAST SECTION Ø2.75 |
| 7 | RK075163-A | COVER TUBE ASSEMBLY |
| 8 | RFG062008 | END CAP Ø6.25 |
| 9 | RFG062009 | END CAP Ø6.25 |



Snap ring kit Part no. : XB19G0575

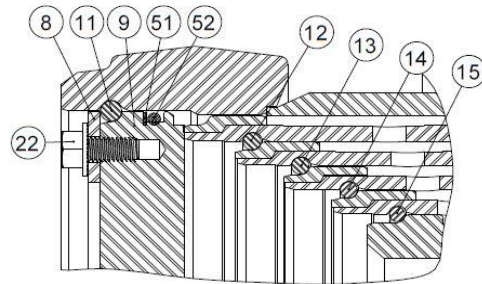
| Item | Description |
|------|-------------|
|------|-------------|

| | |
|----|-------------------|
| 11 | SNAP RING Ø6-3/16 |
| 12 | SNAP RING Ø5-1/4 |
| 13 | SNAP RING Ø4-1/2 |
| 14 | SNAP RING Ø3-3/4 |
| 15 | SNAP RING Ø3 |

Hardware kit Part no. : ZX02G0575

| Item | Description |
|------|-------------|
|------|-------------|

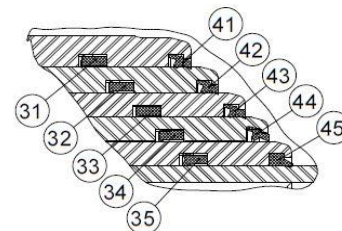
| | |
|----|---|
| 21 | STOVER NUT Ø1-3/4-12 NF GRADE C |
| 22 | SERRATED FLANGE HHS GRADE 5 Ø3/8-16 NC X 3/4 LG |
| 23 | GREASE FITTING STRAIGHT 1/8 NPT |



Seal kit Part no. : UI47G0575

| Item | Description |
|------|-------------|
|------|-------------|

| | |
|----|-------------------------------|
| 31 | U-CUP Ø6.170 X Ø5.795 X 3/8 |
| 32 | U-CUP Ø5-3/8 X Ø5 X 3/8 |
| 33 | U-CUP Ø4-5/8 X Ø4-1/4 X 3/8 |
| 34 | U-CUP Ø3-7/8 X 3-1/2 X 3/8 |
| 35 | U-CUP DZ Ø3-1/8 X 2-3/4 X 3/8 |
| 41 | WIPER Ø5.795 |
| 42 | WIPER Ø5 |
| 43 | WIPER Ø4-1/4 |
| 44 | WIPER Ø3-1/2 |
| 45 | WIPER DT Ø2-3/4 |
| 51 | BACKUP RING Ø6-1/8 X Ø5-3/4 |
| 52 | O-RING Ø6-1/8 X Ø5-3/4 |



* See product manual

Subject to change without notice, all rights reserved.

REV 1C