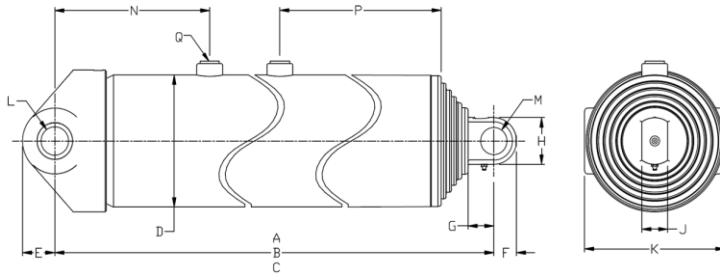


Technical information

Dimensions

Imperial

Metric



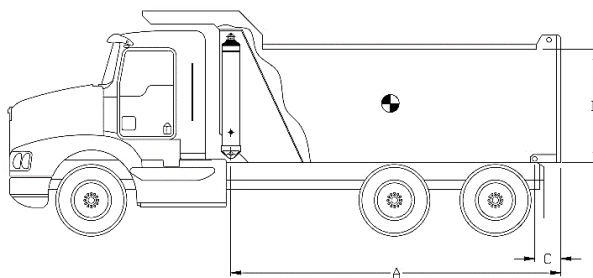
A (stroke)	235,06 in	5 971 mm
B (closed)	64,00 in	1 626 mm
C (opened)	299,06 in	7 596 mm
D	9,90 in	251 mm
E	2,50 in	64 mm
F	1,75 in	44 mm
G	2,00 in	51 mm
H	3,50 in	89 mm
J	2,00 in	51 mm
K	10,88 in	276 mm
L	2,13 in	54 mm
M	2,04 in	52 mm
N	12,00 in	305 mm
P	22,00 in	559 mm
Q	SAE-16	

Stage	Effective diameter		Effective area		Stroke	
1	8,693 in	221 mm	59,35 in ²	38 291 mm ²	47,13 in	1 197 mm
2	7,673 in	195 mm	46,24 in ²	29 832 mm ²	47,00 in	1 194 mm
3	6,673 in	169 mm	34,97 in ²	22 563 mm ²	47,19 in	1 199 mm
4	5,793 in	147 mm	26,36 in ²	17 005 mm ²	47,25 in	1 200 mm
5	5,000 in	127 mm	19,64 in ²	12 668 mm ²	46,50 in	1 181 mm

Specifications	Imperial	Metric
Weight without hydraulic fluid	805 lb	366 kg
Hydraulic fluid volume	41,9 gal. (US)	159 l
Maximum working pressure	2 500 psi	172 bar
Maximum pump flow	50 gpm	189 lpm
Cylinder design limit capacity*	42,8 US tons	38 828 kg

Installation components	Model	Part no.
Block	-	-
Frame	-	-
Hinge	-	-

Cylinder capacity



A = Body Length
B = Body height
C = Overhang

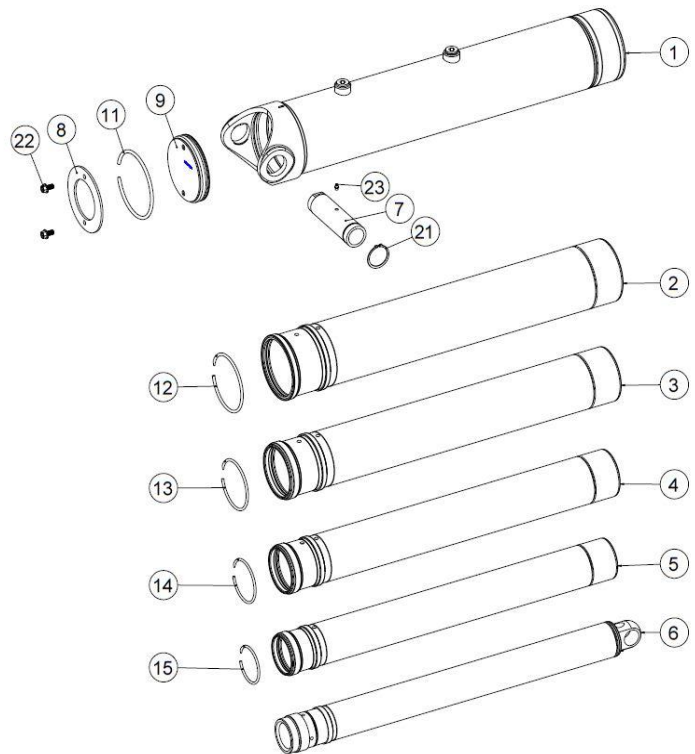
Note:	Body length	24,5 ft		27,0 ft		30,0 ft	
Cylinder capacities based on 90% of the maximum working pressure.	Overhang	12 in	18 in	12 in	18 in	12 in	18 in
	Dump angle	50,3°	51,6°	45,0°	46,0°	40,0°	40,8°
	Body height	Capacities for different box length configuration in US tons at 2000 psi (at 2500 psi)					
For reference only. See www.mailhotindustries.com	36 in	49,0 (61,2)	51,1 (63,9)	45,8 (57,2)	47,4 (59,2)	43,4 (54,2)	44,6 (55,7)
	48 in	51,1 (63,9)	53,6 (66,9)	47,3 (59,1)	49,0 (61,3)	44,4 (55,5)	45,7 (57,2)
	60 in	53,4 (66,7)	56,2 (70,3)	48,8 (61,1)	50,8 (63,5)	45,5 (56,9)	46,9 (58,7)

* See product manual

Subject to change without notice, all rights reserved.

REV 2D

Item	Part no.	Description
1	ROG099034-A	BASE TUBE Ø9.87
2	RMG087120-A	SECTION Ø8.7
3	RMG077121-A	SECTION Ø7.7
4	RMG067122-A	SECTION Ø6.7
5	RMG057123-A	SECTION Ø5.7
6	RNG050038-A	LAST SECTION Ø5
7	SBG021109002	BUSHING
8	RFG091011	END CAP Ø9-1/8
9	RFG091012	END CAP Ø9-1/8

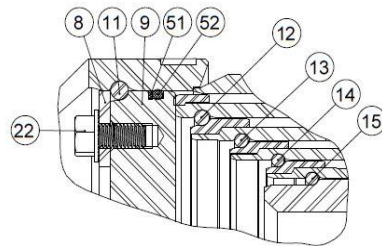


Snap ring kit Part no. : XB19G0875

Item	Description
11	SNAP RING Ø9-1/8
12	SNAP RING Ø8
13	SNAP RING Ø7
14	SNAP RING Ø6-1/16
15	SNAP RING Ø5-1/4

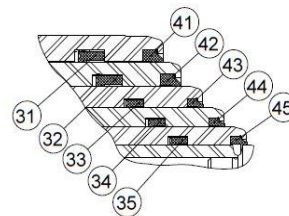
Hardware kit Part no. : ZX03G0875

Item	Description
21	SNAP RING N5100-275
22	SERRATED FLANGE HHS GRADE 5 Ø1/2-13 NC X 1 LG
23	GREASE FITTING STRAIGHT 1/8 NPT



Seal kit Part no. : UI47G0875

Item	Description
31	U-CUP Ø9.195 X Ø8.695 X 9/16
32	U-CUP Ø8.175 X Ø7.675 X 9/16
33	U-CUP Ø7.175 X Ø6.675 X 9/16
34	U-CUP Ø6.170 X Ø5.795 X 3/8
35	U-CUP Ø5-3/8 X Ø5 X 3/8
41	WIPER Ø8.695
42	WIPER Ø7.675
43	WIPER Ø6.675
44	WIPER Ø5.795
45	WIPER Ø5
51	BACK-UP Ø9-1/8 X Ø8-3/4
52	O-RING Ø9-1/8 X Ø8-3/4 (PARKER N1470/N0674)



* See product manual

Subject to change without notice, all rights reserved.

REV 2D