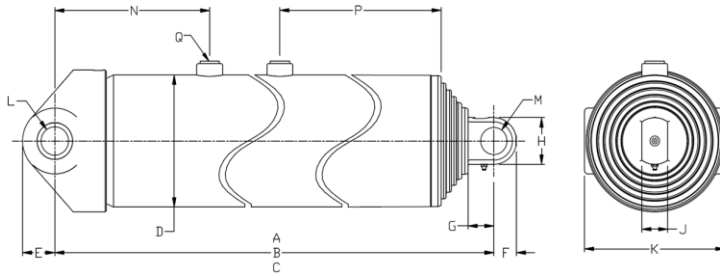


Technical information



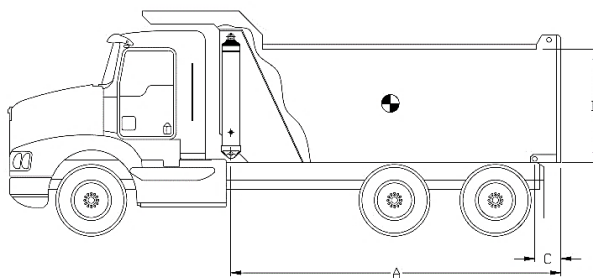
| Dimensions | Imperial | Metric |
|------------|-----------|----------|
| A (stroke) | 250,31 in | 6 358 mm |
| B (closed) | 66,50 in | 1 689 mm |
| C (opened) | 316,81 in | 8 047 mm |
| D | 8,80 in | 224 mm |
| E | 2,38 in | 60 mm |
| F | 1,63 in | 41 mm |
| G | 2,00 in | 51 mm |
| H | 3,25 in | 83 mm |
| J | 2,00 in | 51 mm |
| K | 9,50 in | 241 mm |
| L | 2,13 in | 54 mm |
| M | 2,04 in | 52 mm |
| N | 12,00 in | 305 mm |
| P | 22,00 in | 559 mm |
| Q | SAE-16 | |

| Stage | Effective diameter | | Effective area | | Stroke | |
|-------|--------------------|--------|-----------------------|------------------------|----------|----------|
| 1 | 7,673 in | 195 mm | 46,24 in ² | 29 832 mm ² | 49,81 in | 1 265 mm |
| 2 | 6,673 in | 169 mm | 34,97 in ² | 22 563 mm ² | 50,19 in | 1 275 mm |
| 3 | 5,793 in | 147 mm | 26,36 in ² | 17 005 mm ² | 50,25 in | 1 276 mm |
| 4 | 5,000 in | 127 mm | 19,64 in ² | 12 668 mm ² | 50,63 in | 1 286 mm |
| 5 | 4,250 in | 108 mm | 14,19 in ² | 9 152 mm ² | 49,44 in | 1 256 mm |

| Specifications | Imperial | Metric |
|---------------------------------|----------------|-----------|
| Weight without hydraulic fluid | 675 lb | 307 kg |
| Hydraulic fluid volume | 34,0 gal. (US) | 129 l |
| Maximum working pressure | 2 250 psi | 155 bar |
| Maximum pump flow | 50 gpm | 189 lpm |
| Cylinder design limit capacity* | 37,1 US tons | 33 657 kg |

| Installation components | Model | Part no. |
|-------------------------|-------|----------|
| Block | - | - |
| Frame | - | - |
| Hinge | - | - |

Cylinder capacity



A = Body Length
B = Body height
C = Overhang

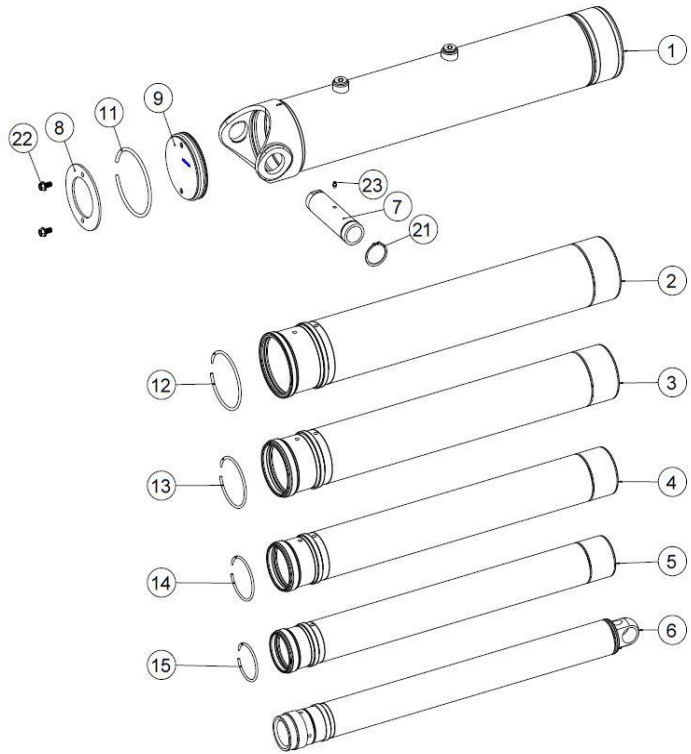
| Note: | Body length | 26,0 ft | | 28,5 ft | | 32,0 ft | |
|---|-------------|--|-------------|-------------|-------------|-------------|-------------|
| Cylinder capacities based on 90% of the maximum working pressure. | Overhang | 12 in | 18 in | 12 in | 18 in | 12 in | 18 in |
| | Dump angle | 50,4° | 51,5° | 45,3° | 46,3° | 39,8° | 40,5° |
| | Body height | Capacities for different box length configuration in US tons at 2000 psi (at 2250 psi) | | | | | |
| For reference only. See www.mailhotindustries.com | 36 in | 35,1 (39,4) | 36,5 (41,0) | 33,0 (37,1) | 34,0 (38,3) | 31,1 (35,0) | 31,9 (35,9) |
| | 48 in | 36,5 (41,0) | 38,1 (42,8) | 34,0 (38,2) | 35,1 (39,5) | 31,8 (35,8) | 32,6 (36,7) |
| | 60 in | 38,0 (42,7) | 39,8 (44,8) | 35,0 (39,4) | 36,3 (40,9) | 32,5 (36,6) | 33,4 (37,6) |

* See product manual

Subject to change without notice, all rights reserved.

REV 2D

| Item | Part no. | Description |
|------|--------------|--------------------|
| 1 | ROG087030-A | BASE TUBE Ø8.78 |
| 2 | RMG077107-A | SECTION Ø7.7 |
| 3 | RMG067106-A | SECTION Ø6.7 |
| 4 | RMG057105-A | SECTION Ø5.7 |
| 5 | RMG050104-A | SECTION Ø5 |
| 6 | RNG042034-A | LAST SECTION Ø4.25 |
| 7 | SBG021095001 | BUSHING |
| 8 | RFG081014 | END CAP Ø8-1/8 |
| 9 | RFG081013 | END CAP Ø8-1/8 |

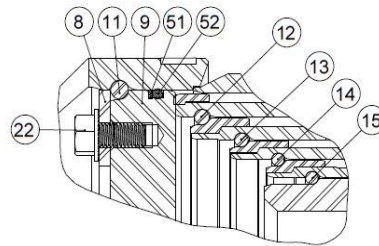


Snap ring kit Part no. : XB19G0765

| Item | Description |
|------|-------------------|
| 11 | SNAP RING Ø8-1/8 |
| 12 | SNAP RING Ø7 |
| 13 | SNAP RING Ø6-1/16 |
| 14 | SNAP RING Ø5-1/4 |
| 15 | SNAP RING Ø4-1/2 |

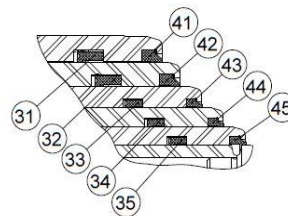
Hardware kit Part no. : ZX03G0765

| Item | Description |
|------|---|
| 21 | SNAP RING N5100-275 |
| 22 | SERRATED FLANGE HHS GRADE 5 Ø1/2-13 NC X 1 LG |
| 23 | GREASE FITTING STRAIGHT 1/8 NPT |



Seal kit Part no. : UI47G0765

| Item | Description |
|------|------------------------------|
| 31 | U-CUP Ø8.175 X Ø7.675 X 9/16 |
| 32 | U-CUP Ø7.175 X Ø6.675 X 9/16 |
| 33 | U-CUP Ø6.170 X Ø5.795 X 3/8 |
| 34 | U-CUP Ø5-3/8 X Ø5 X 3/8 |
| 35 | U-CUP Ø4-5/8 X Ø4-1/4 X 3/8 |
| 41 | WIPER Ø7.675 |
| 42 | WIPER Ø6.675 |
| 43 | WIPER Ø5.795 |
| 44 | WIPER Ø5 |
| 45 | WIPER Ø4-1/4 |
| 51 | BACK-UP RING Ø8-1/8 X Ø7-3/4 |
| 52 | O-RING Ø8-1/8 X Ø7-3/4 |



* See product manual

Subject to change without notice, all rights reserved.

REV 2D