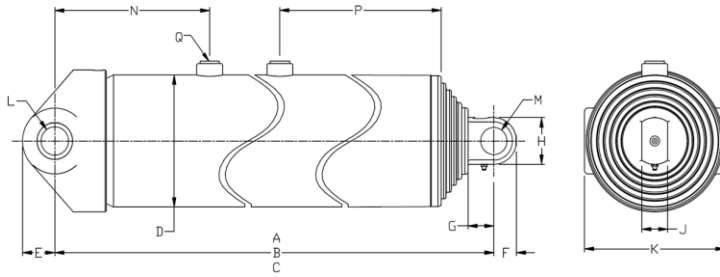


Technical information

Dimensions	Imperial	Metric
A (stroke)	179,94 in	4 570 mm
B (closed)	59,75 in	1 518 mm
C (opened)	239,69 in	6 088 mm
D	7,77 in	197 mm
E	2,00 in	51 mm
F	1,63 in	41 mm
G	2,00 in	51 mm
H	3,25 in	83 mm
J	2,00 in	51 mm
K	9,50 in	241 mm
L	2,13 in	54 mm
M	2,04 in	52 mm
N	12,00 in	305 mm
P	15,00 in	381 mm
Q	SAE-16	

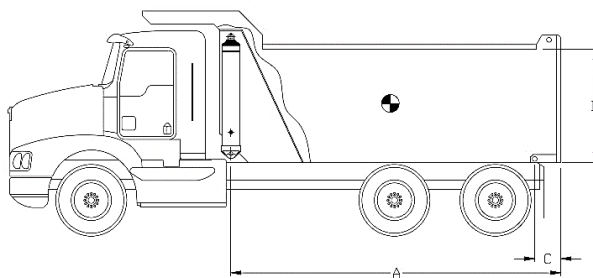


Stage	Effective diameter		Effective area		Stroke	
1	6,675 in	170 mm	34,99 in ²	22 577 mm ²	44,19 in	1 122 mm
2	5,795 in	147 mm	26,38 in ²	17 016 mm ²	44,56 in	1 132 mm
3	5,000 in	127 mm	19,64 in ²	12 668 mm ²	45,44 in	1 154 mm
4	4,250 in	108 mm	14,19 in ²	9 152 mm ²	45,75 in	1 162 mm

Specifications	Imperial	Metric
Weight without hydraulic fluid	458 lb	208 kg
Hydraulic fluid volume	20,5 gal. (US)	78 l
Maximum working pressure	2 750 psi	190 bar
Maximum pump flow	50 gpm	189 lpm
Cylinder design limit capacity*	37,1 US tons	33 657 kg

Installation components	Model	Part no.
Block	-	-
Frame	-	-
Hinge	-	-

Cylinder capacity



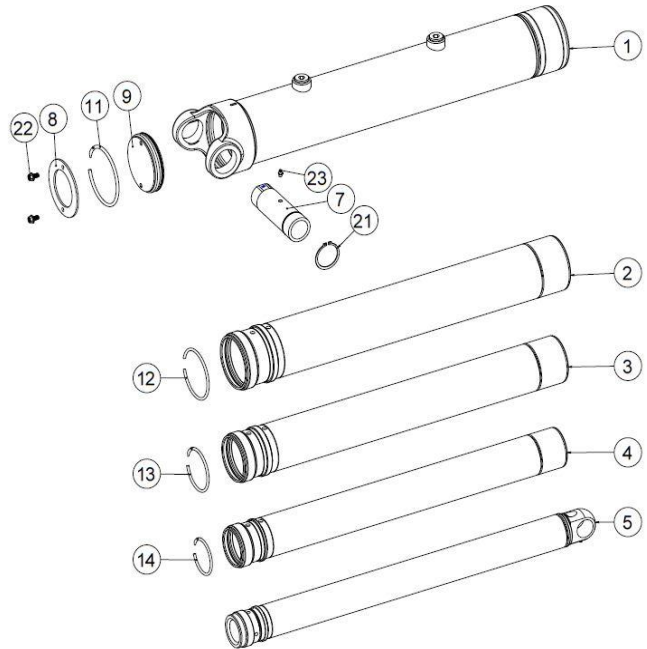
A = Body Length
 B = Body height
 C = Overhang

Note:	Body length	19,0 ft		20,0 ft		21,0 ft	
Cylinder capacities based on 90% of the maximum working pressure.	Overhang	6 in	12 in	6 in	12 in	12 in	18 in
	Dump angle	49,0°	50,5°	46,2°	47,5°	44,9°	46,2°
	Body height	Capacities for different box length configuration in US tons at 2000 psi (at 2750 psi)					
For reference only. See www.mailhotindustries.com	36 in	33,7 (46,4)	35,5 (48,9)	32,7 (44,9)	34,2 (47,1)	33,2 (45,6)	34,7 (47,7)
	48 in	35,3 (48,6)	37,4 (51,5)	34,0 (46,8)	35,8 (49,2)	34,5 (47,4)	36,2 (49,8)
	60 in	37,1 (51,0)	39,5 (54,4)	35,5 (48,8)	37,5 (51,5)	35,9 (49,4)	37,9 (52,1)

* See product manual

Subject to change without notice, all rights reserved.

Item	Part no.	Description
1	ROG077041-A	BASE TUBE Ø7.7
2	RMG067184-A	SECTION Ø6.7
3	RMG057183-A	SECTION Ø5.7
4	RMG050185-A	SECTION Ø5
5	RNG042048-A	LAST SECTION Ø4.25
7	SBG021095006	BUSHING
8	RFG071017	END CAP Ø7-1/8
9	RFG071016	END CAP Ø7-1/8

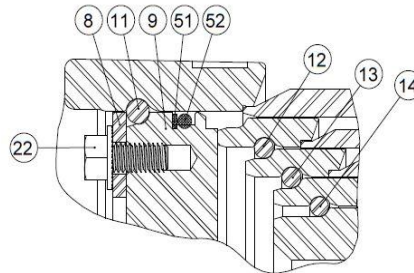


Snap ring kit Part no. : XB19G0674

Item	Description
11	SNAP RING Ø7-1/8
12	SNAP RING Ø6-1/16
13	SNAP RING Ø5-1/4
14	SNAP RING Ø4-1/2

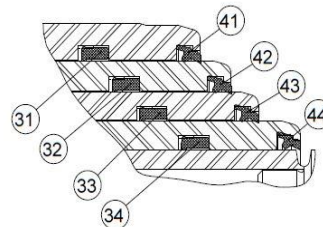
Hardware kit Part no. : ZX03G0674

Item	Description
21	SNAP RING N5100-275
22	SERRATED FLANGE HHS GRADE 5 Ø1/2-13 NC X 1 LG
23	GREASE FITTING STRAIGHT 1/8 NPT



Seal kit Part no. : UI47G0674

Item	Description
31	U-CUP Ø7.175 X Ø6.675 X 9/16
32	U-CUP Ø6.170 X Ø5.795 X 3/8
33	U-CUP Ø5-3/8 X Ø5 X 3/8
34	U-CUP Ø4-5/8 X Ø4-1/4 X 3/8
41	WIPER Ø6.675
42	WIPER Ø5.795
43	WIPER Ø5
44	WIPER Ø4-1/4
51	BACK-UP RING Ø7-1/8 X Ø6-3/4
52	O-RING Ø7-1/8 X Ø6-3/4



* See product manual

Subject to change without notice, all rights reserved.

REV 2C