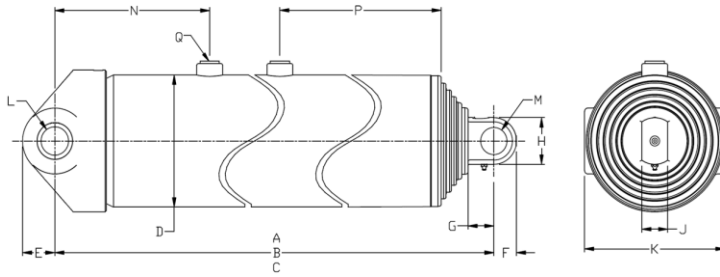


Technical information

| Dimensions | Imperial | Metric |
|------------|-----------|----------|
| A (stroke) | 109,19 in | 2 773 mm |
| B (closed) | 50,00 in | 1 270 mm |
| C (opened) | 159,19 in | 4 043 mm |
| D | 5,87 in | 149 mm |
| E | 1,94 in | 49 mm |
| F | 1,63 in | 41 mm |
| G | 2,00 in | 51 mm |
| H | 3,25 in | 83 mm |
| J | 2,00 in | 51 mm |
| K | 7,25 in | 184 mm |
| L | 2,13 in | 54 mm |
| M | 2,04 in | 52 mm |
| N | 12,00 in | 305 mm |
| P | 15,00 in | 381 mm |
| Q | SAE-16 | |

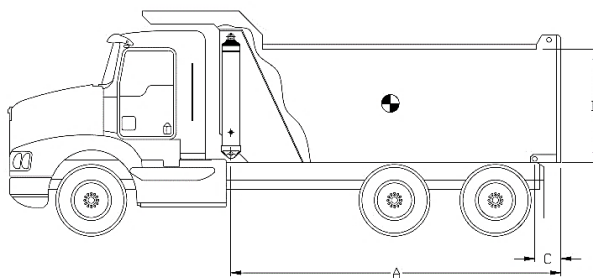


| Stage | Effective diameter | | Effective area | | Stroke | |
|-------|--------------------|--------|-----------------------|------------------------|----------|--------|
| 1 | 5,000 in | 127 mm | 19,64 in ² | 12 668 mm ² | 36,00 in | 914 mm |
| 2 | 4,250 in | 108 mm | 14,19 in ² | 9 152 mm ² | 36,38 in | 924 mm |
| 3 | 3,500 in | 89 mm | 9,62 in ² | 6 207 mm ² | 36,88 in | 937 mm |

| Specifications | Imperial | Metric |
|---------------------------------|---------------|-----------|
| Weight without hydraulic fluid | 224 lb | 102 kg |
| Hydraulic fluid volume | 7,8 gal. (US) | 30 l |
| Maximum working pressure | 2 750 psi | 190 bar |
| Maximum pump flow | 40 gpm | 151 lpm |
| Cylinder design limit capacity* | 29,6 US tons | 26 853 kg |

| Installation components | Model | Part no. |
|-------------------------|-------|----------|
| Block | - | - |
| Frame | - | - |
| Hinge | - | - |

Cylinder capacity



A = Body Length
 B = Body height
 C = Overhang

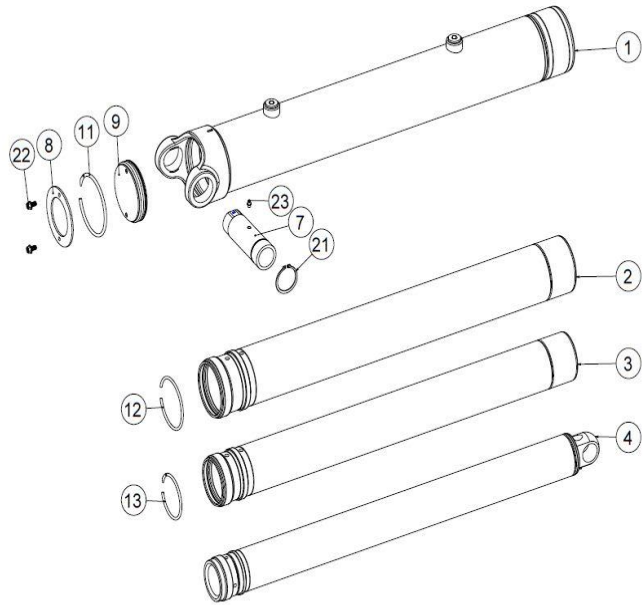
| Note: | Body length | 11,5 ft | | 12,0 ft | | 13,0 ft | |
|---|-------------|--|-------------|-------------|-------------|-------------|-------------|
| Cylinder capacities based on 90% of the maximum working pressure. | Overhang | 0 in | 6 in | 6 in | 12 in | 12 in | 18 in |
| | Dump angle | 48,0° | 50,5° | 48,0° | 50,5° | 45,7° | 48,0° |
| | Body height | Capacities for different box length configuration in US tons at 2000 psi (at 2750 psi) | | | | | |
| For reference only. See www.mailhotindustries.com | 36 in | 22,2 (30,5) | 24,2 (33,2) | 23,4 (32,2) | 25,7 (35,3) | 24,0 (33,0) | 26,3 (36,1) |
| | 48 in | 23,7 (32,5) | 26,1 (35,9) | 25,0 (34,4) | 27,8 (38,3) | 25,6 (35,1) | 28,3 (38,9) |
| | 60 in | 25,3 (34,8) | 28,4 (39,0) | 26,9 (37,0) | 30,4 (41,8) | 27,3 (37,6) | 30,7 (42,3) |

* See product manual

Subject to change without notice, all rights reserved.

| Item | Part no. | Description |
|------|----------|-------------|
|------|----------|-------------|

| | | |
|---|--------------|---------------------|
| 1 | ROG059049-A | BASE TUBE Ø5,9 |
| 2 | RMG050233-A | SECTION Ø5 |
| 3 | RMG042234-A | SECTION Ø4-1/4 |
| 4 | RNG035062-A | LAST SECTION Ø3-1/2 |
| 7 | SBG021072007 | BUSHING |
| 8 | RFG053006 | END CAP Ø5-3/8 |
| 9 | RFG053007 | END CAP Ø5-3/8 |

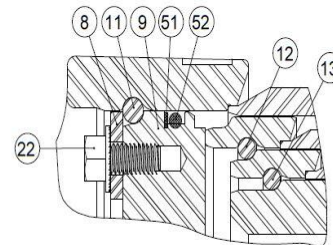


Snap ring kit Part no. : XB19G0503

| Item | Description |
|------|------------------|
| 11 | SNAP RING Ø5-3/8 |
| 12 | SNAP RING Ø4-1/2 |
| 13 | SNAP RING Ø3-3/4 |

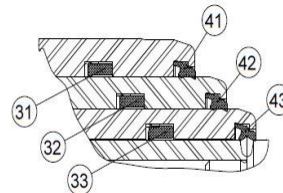
Hardware kit Part no. : ZX02G0503

| Item | Description |
|------|---|
| 21 | SNAP RING N5100-275 |
| 22 | SERRATED FLANGE HHS GRADE 5 Ø3/8-16 NC X 3/4 LG |
| 23 | GREASE FITTING STRAIGHT 1/8 NPT |



Seal kit Part no. : UI47G0503

| Item | Description |
|------|-----------------------------|
| 31 | U-CUP Ø5-3/8 X Ø5 X 3/8 |
| 32 | U-CUP Ø4-5/8 X Ø4-1/4 X 3/8 |
| 33 | U-CUP Ø3-7/8 X Ø3-1/2 X 3/8 |
| 41 | WIPER Ø5 |
| 42 | WIPER Ø4-1/4 |
| 43 | WIPER Ø3-1/2 |
| 51 | BACKUP RING Ø5-3/8 X Ø5 |
| 52 | O-RING Ø5-3/8 X Ø5 |



* See product manual

Subject to change without notice, all rights reserved.

REV 2C